

Through
recipient
partner agencies,
we have served
14,800
people during the
health and
economic crisis.



Impact Report July 2019 - June 2020

Letter from the Director Building Resiliency

By February of 2020, Table to Table (T2T) was poised to report another year of tremendous community effort. We were on track to rescue more than 2 million pounds of food. We spent the fall of 2019 adding to our team and working on process improvements. Like all of you, we could not have envisioned how our year would end or that our new team and improved systems would be so thoroughly put to the test.

Our first and most significant challenge was losing 80% of our volunteers in March. Students left campus and uncertainty about safety led us to ask volunteers at high-risk for COVID complications to take a break. The City of Iowa City, Aero Rental, Bur Oak Land Trust, and more than 60 new and returning volunteers stepped up to continue the mission.

Amid major disruptions in the food system, we received calls to rescue 120,000 pounds of food from food transport drivers, hotels, farms, and food processors, all of which was above and beyond the 45,000 pounds we regularly rescue each week.

Letting any nutritious food go to waste at a time when some of our hunger relief partners were serving double and triple the number of people in need is simply unacceptable. For our neighbors enduring this health and financial crisis, T2T deliveries are the difference between families nourishing themselves with good protein, fresh fruits, and veggies or filling their bellies with food that is plentiful, cheap, and far less nutritious.

During this time, T2T delivered enough food for at least one nutritious meal per day for every food insecure family in Johnson County. We have more work to do to meet the full need.

Over 24 years, Table to Table has become known for our strong community relationships and our reliability. This year, we add something else to that list... **resiliency.** For T2T, resiliency is a culmination of resources only possible because of you. We have seen the community come together, like never before, to join us in ensuring that despite the pandemic, people are getting the nutrition they need.

Because of your unprecedented contributions of money and time, we were able to rise to the challenges presented by the pandemic and accomplish more than we ever imagined.

Please continue to stand with us—to lend us your hands, your time, and your resources—so our community members can continue to rely on us to ensure that everybody has access to fresh, healthy food for themselves and their families.

In gratitude,

Nicki Ross
Executive Director



The City of Iowa City and Aero Rental lent two staff everyday in the first weeks of the crisis. Bur Oak Land Trust filled 40+ volunteer shifts in April. Together, volunteers rescued half a million pounds of food in two months.



"Aero Rental was significantly affected by the pandemic. All parties & events were cancelled ... We had delivery drivers that had no orders to fill. To keep our people employed we looked at ways we could give back to our community that had always supported us.

"Volunteering and community service is what makes our city so special. Those of us at Aero that participated would certainly say we all got more out of the experience than we expected."

John Clarahan, Aero Rental

Many thanks to our FY20 *staff* and *board of directors* for their outstanding leadership this year.

Lois Burkett, Bookkeeper
Frank Lalor, Special Projects & Requests
Anne Langebartels, Communications & Development Coordinator
Jared Long, Volunteer & Program Coordinator
Emily Meister, Food Rescue Program Manager
Nicki Ross, Executive Director
Chad Shoppa, Program Assistant

Laura Burkamper, Chair
Christy Fehlberg, Vice-Chair
David Frisvold, Treasurer
Kaily Hoard, Secretary
Amelia Akers
Sheila Boyd
Michelle Croft
Todd Gibson

Allie Gnade
John Greve
Howard Horan
Tom Jepson
Molly Johnson
Will Keen
Shawn Meaney
Patty Meier
Renee Smith-LaBarge

Additional thanks to:

AmeriCorps Members

Jayne Meacham
Ellie Paxson
Juliann Skarda
Nick Simone
Zach Vig
Andrew Winkers

Sourcing food donations

T2T's quick response to major disruption in all areas of the food system this year helped our community recapture the potential of valuable food before it went to waste.

Preparation & consumption

Restaurants and cafeterias donated 95,000 lbs. of extra ingredients and prepared meals.



Markets & purchasing

T2T volunteers picked up 1.2 million lbs. in food donations directly from grocery stores and other points of purchase.



Food production

T2T collected 54,000 lbs. of fruits, vegetables, and eggs directly from local farmers and gardeners.



Distribution & aggregation

Volunteers collected 890,000 lbs. of food from warehouses and food transport trucks with unclaimed edible food.



Food processing

T2T received 60,000 lbs. of food from local creameries and meat processors.



Our financials

\$6.2 MILLION

Value of the food rescued this year from 100 donors

\$369,418

Operating cost to rescue and redistribute 2.3 million pounds of food

EXPENSES \$6,561,200

95%

In-kind value of donated food \$6,191,782

5%

4% Food Rescue Expenses \$280,487
1% Administration \$66,034
<1% Fundraising \$22,897

INCOME \$6,694,441

United Way \$47,000
Resource Sharing \$13,487

Contributions & Events \$220,896

44%

Private Grants \$93,000

19%

Local/State Gov't Grants \$92,575

18%

Vehicle Funding \$35,701

9% 7% 3%

*Unaudited financials
**Includes in-kind donations

This year, two of our oldest food rescue vans broke down for good. Without them, we would miss 25% of our food deliveries. Thanks to these donors for their gifts of \$1,000 or more and to the many others for their smaller but equally impactful gifts, we were able to replace our vehicles. Each of our new vans will make 25,000 food pickups and deliveries during their lifetime!

Iowa City Masonic Foundation
Johnson County
HACAP Food Reservoir
Community Foundation of Johnson County
City of Iowa City
Hills Bank
St. Joseph Church
Burton & Christine Wilcox

Bingo & Friends
City of Coralville
City of North Liberty
Deery Brothers of Iowa City
Charlotte Fairlie
City of Hills
Jerry Swails & Christine Taylor
Joshua Christain

Together, our two new vehicles have rescued 400,000 lbs. of food ... so far!



Recipient Partners

Table to Table collected donated food from 100 businesses and community partners this year. At the start of the crisis in March, we prioritized emergency food needs of hunger relief services and at the same time many youth and senior programs paused food delivery service. In response to these shifts, we adapted to the most pressing needs of our neighbors and prioritized programs who were serving more people in crisis.

Hunger Relief Services

Food Banks

CommUnity Food Bank
HACAP Food Reservoir

Food Pantries

Coralville Community Food Pantry
Ecumenical Towers
Field to Family Farm Stands
Food Pantry at Iowa (East & West Campus)
Goosetown Pantry
Hills & Lone Tree Pantries
IC Compassion Pantry
North Liberty Community Pantry
Resurrection Assembly Church
Solon Community Food Pantry

Meal Sites

Free Lunch Program
North Liberty Baptist Church Pantry
Salvation Army

Shelter/Housing

Domestic Violence Intervention Program
Shelter House
Successful Living

Other Programs Served this Year

Youth Services & Low-Income Childcare

4Cs Home Ties Child Care Center
Faith Academy
Fifth Ward Saints North
Good Shepherd Center
HACAP Head Start - Johnson County Sites
Little Creations Academy
Mayor's Youth Empowerment Program
Neighborhood Centers of Johnson County
North Liberty Library
North Liberty Summer Lunch & Fun
Theodore Roosevelt Education Center
United Action for Youth
We Care 2 Daycare

Other Agencies

Agape Cafe
Animal Shelter
Clear Creek Amana (Tiffin) Pantry
Elder Services
First Presbyterian Church
Free Medical Clinic
Hope Lodge
Inside OUT Reentry Community
Iowa City Senior Center
NAMI - RPlace Peer Recovery Center
Path of Hope
Ronald McDonald House
South District Neighborhood Association



...through volunteers

T2T volunteers are truly **food rescue superheroes**. Whether they've been volunteering for many years or started volunteering just before the crisis began, they delivered more than 2 million meals worth of food this year.

Erin Peterson:

A Whirlwind First Year

Erin has been volunteering with T2T for just about a year now, and what a year it's been.

From seeing how individuals were willing to make drastic changes to their daily lives while continuing to support T2T in various ways, to how organizations had to quickly adapt their policies and procedures during COVID, to how many people after the derecho volunteered to help rescue food when they didn't have power in their own homes—we have an amazing community dedicated to helping one another and I feel very lucky to be a part of it!



Harry & Nancy Olthoff:

An Eye-opening Experience

Harry and Nancy have enjoyed the camaraderie of T2T volunteers and staff during their seven years of volunteering, and appreciate the active role they have in our community through rescuing food.

Our eyes have been opened to the depth of hunger and need in Johnson County and policy issues that prevent communities from reducing food waste and food insecurity. T2T has shown us just how generous community partners can be, donating thousands of pounds of food each week and showing care for the recipients.



Read more about our collaborations and volunteers at table2table.org/news.



THANKS TO YOU, WE ARE

building connections between abundance and hunger in Johnson County

THIS IS OUR **IMPACT REPORT** FOR 2020.



840 S. Capitol St.
Iowa City, IA 52240
319-337-3400
www.table2table.org

Rescue food with us:
www.table2table.org/volunteers
Donate to the cause:
www.table2table.org/donateonline

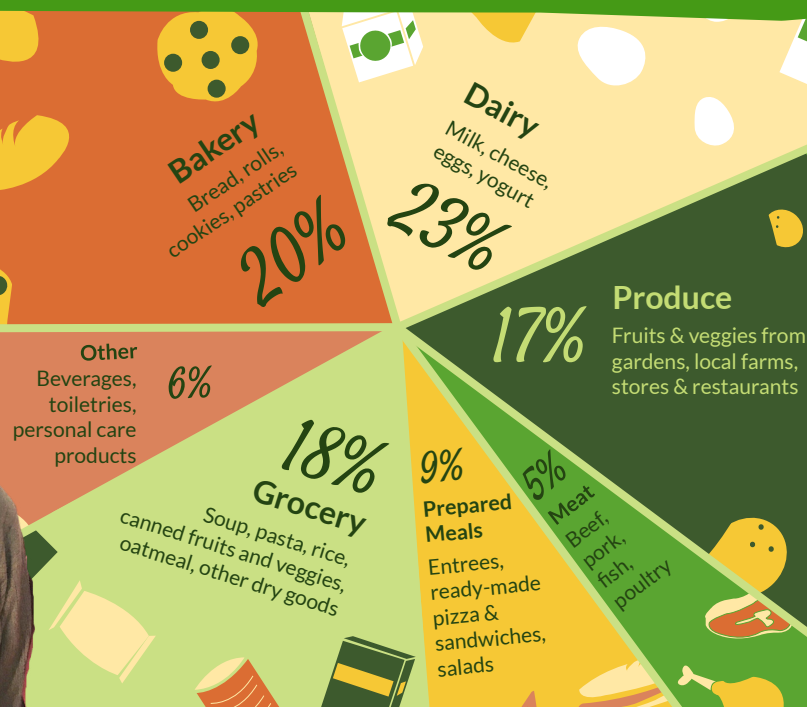


A SINCERE
heart-felt thank you for
HELPING TABLE TO TABLE
IN ITS MISSION AND WORK.
MAY OUR EFFORTS ADVANCE
AND TOUCH THE LIVES OF SO
MANY WHO ARE HUNGRY.
FOR US ENGAGED IN THIS
DAILY MISSION, MAY OUR
RESOLVE NEVER WITHER.

FRANK

Frank Lalor, T2T founder
and staff member for 24
years and counting

What's in the food rescue box?



Where do we get it? Where does it end up?

Open this report to learn where we source food donations and who they are delivered to.

Donate to the cause! www.table2table.org/donateonline